

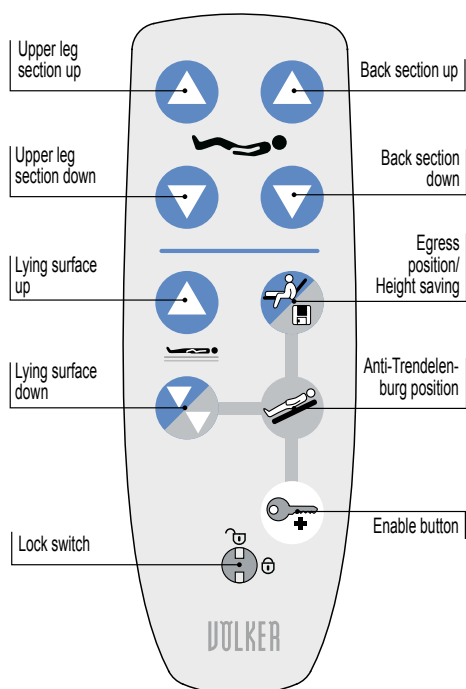
Brief instructions for use Model 5384 Kepler - Style, Select

from year of manufacture 03/2016 onwards

VÖLKER

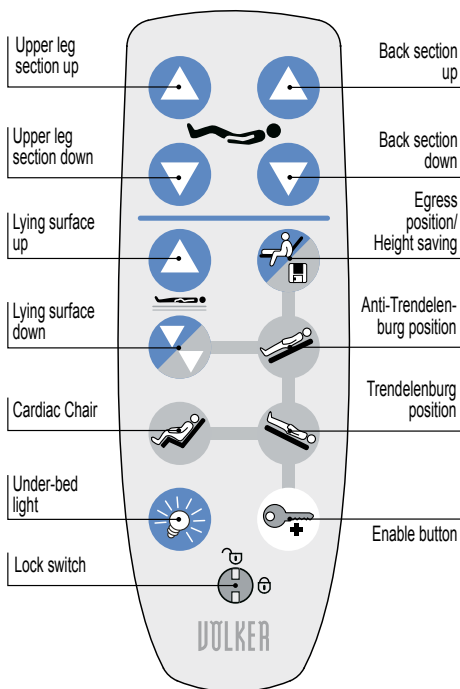
Hand control E2476

Style model



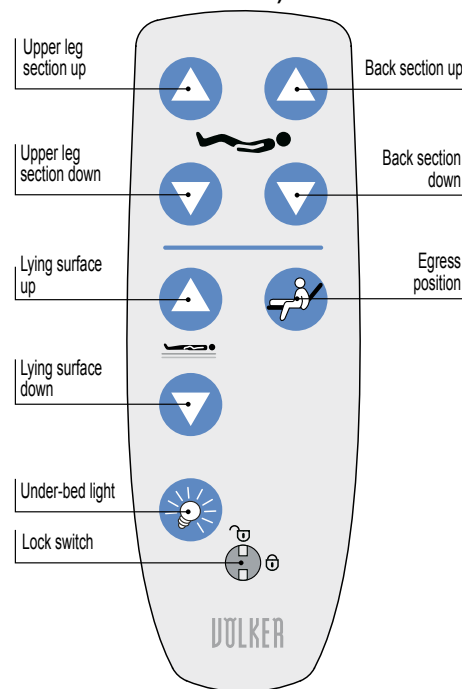
Hand control E2486

Select model (optional for style model)



Patient hand control E2478

Optional (in addition and only in conjunction with another hand control)



Cleaning, disinfection

In order to maintain the functionality of the bed, the bed should be cleaned, disinfected and tested

- at regular intervals,
- as required,
- after each occupant/patient change,
- according to the guidelines of the relevant hygiene plan,

so that it can be reused immediately without risk. Incorrect cleaning/disinfection of the bed can cause danger.

The detergents used must contain one of the following ingredients:

- Quaternary ammonium compounds
- Hydrogen peroxide
- Peroxides

Please observe the information provided by the detergent manufacturer. Failure to observe these instructions can lead to personal injury or material damage.

WARNING "Risk of electric shock / fire and functional failure"

The bed must always be disconnected from the power supply before cleaning and disinfection.

Cleaning

Depending on the degree of soiling, we recommend cleaning the bed with a damp cloth or similar. A soft brush can also be used for stubborn dirt or stains. Do not get the bed too wet whilst cleaning.

Wipe disinfection

The dilution ratio specified by the detergent manufacturer in the corresponding instructions for use must be used.

NOTE Solvents are not permitted.

- Grinding agents, scouring pads or other dulling substances must not be used.
- Organic solvents such as halogenated / aromatic hydrocarbons and ketones must not be used.

The following instructions must be observed when using cleaning and disinfecting agents:

- As a general rule, the working solutions should be freshly prepared.
- The concentrations used should be neither higher nor lower than those indicated. The so-called "shot" method should not be used under any circumstances. Under no circumstances should someone using a disinfectant follow their own judgement in adding a cleaning agent such as soap or washing-active substances (leads to soap failure).
- There is a risk of fire or explosion from alcoholic spray disinfectants when these are used over large areas.
- Detergents must not contain any corrosive or irritant components.
- They must not contain any substances that change the surface structure or gripping properties of the materials.
- Lubricants must not be affected.
- The pH value of the water must be no higher or lower than 6 - 8.
- Water should not exceed a total water hardness of 0.9 mmol/l (corresponding to 5°dH).

The specifications we have issued, do not absolve the user of the obligation to carry out his or her own checks and tests, since the ratios (e.g. water hardness) can vary depending on the geographical location. It is therefore impossible to offer legally binding assurance of certain properties.

The plugs of the cables and the sockets of the control box are only protected against splash water when plugged together and with the cover (securing clamp) provided.

- Prevent water and detergents from getting into unused connections.
- Labels and markings may not be brushed or cleaned with high pressure.
- Dry the bed with special care and test it before reuse.
- Stubborn dirt or stains should be soaked before cleaning (please check beforehand).

Spray lances and automatic washing systems

WARNING Cleaning and disinfection using spray lances from high-pressure cleaning equipment and in automatic bed washing systems is **not** permissible.

If unsuitable washing and disinfecting agents are used, if the mixing ratio is incorrect or if the beds are not adequately cared for, damage can occur to the surface coating for which Völker GmbH is not liable.

Cleaning the hand controls

To avoid so-called "cross-contamination" between the occupant/patient and nursing staff, the hand controls must be cleaned daily!

Brief instructions for use Model 5384 Kepler - Style, Select

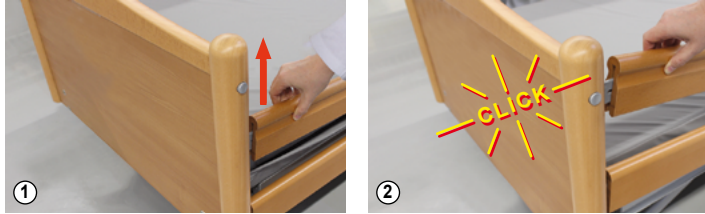
from year of manufacture 03/2016 onwards

VÖLKER

Continuous side rails, style model

Raising the side rails

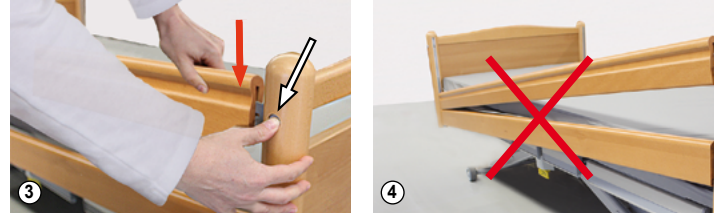
To raise the side rails, take hold of the top rail and lift it first at the head end and then at the foot end until the rail audibly engages (1, 2).



Lowering the side rails

Starting at the foot end, take hold of the top rail and lift it slightly. Press the button on the side and lower the side rail at the foot end by hand. Repeat at the head end (3).

To prevent the patient from falling out, the continuous side rails must always be raised at the head end first and always lowered again first at the foot end! (4)



Divided side rails, select model

Raising the side rails

Pull the side rail out horizontally until the end stop, and raise it upwards (1). To adjust the height of the side rail, pull the telescopic section upwards until it reaches its end stop (2).

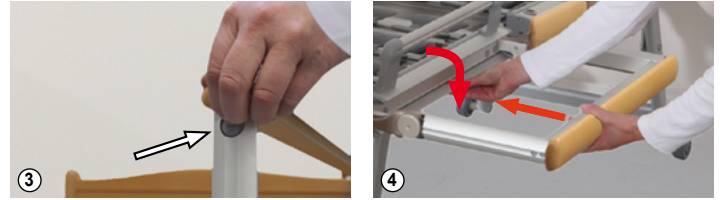
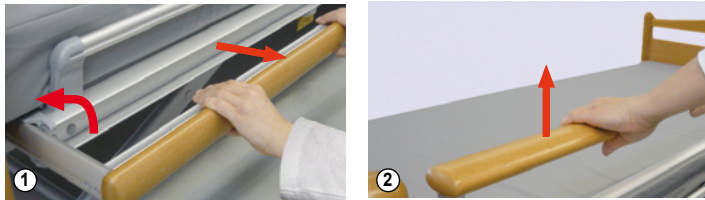
Lowering the side rails

Press both buttons on the outside of the frame at the same time to bring the

height-adjustable side rail to its lowest position (3).

Press the "Drücken / Press" trigger at the lower edge of the side rail and tilt it sideways into a horizontal position, so that it lies parallel to the floor. Push the side rail completely underneath the lying surface (4).

When using the raised side rails 43.5 - 45 cm, the mattress holder must be folded in or out.



Rail infill panels

The rail infill panels close the middle gap between the divided side rails on Völker beds so as to enable a continuous side rail solution.

NOTE Please observe the detailed instructions for use for the rail infill panels.

The rail infill panels are inserted in the insertion sleeves of the upper leg section.

WARNING Make sure that the side rails are fully set up and latched into place. When activating the electric lying surface adjustment or side rails, it must be ensured that the patient/occupant is not in contact with the side rails and that no part of the body is protruding through the side rails. We strongly recommend that you lock the functions of the hand control.



To remove the rail infill panel from the holder, move the pendulum into a vertical position and pull the rail infill panel out upwards at the same time.

Rapid lowering of the back section / CPR function

Both models of the bed have a mechanical rapid lowering of the back section for reanimation as standard.

WARNING The CPR function (Cardiopulmonary Resuscitation function) may only be executed in an **emergency** and only by trained specialist personnel!

WARNING The CPR function may **not** be used instead of the hand control for lowering the back section!



Lever for rapid lowering of the back section for reanimation, both sides below the seat area.



Pull the yellow lever forwards for rapid lowering of the back section. The back section now quickly moves downwards.